



Cuddly Baby

DELICATE HANDKNIT BABY CLOTHING

PATTERN 141 - FLEUR DE LUNE DRESS



SIZE: 3-6 months

MATERIALS

Yarn: 150 gr pearl yarn size #5.

Buttons: 6 small buttons.

| Needles | Stitches |
|----------------------------|---|
| Knitting needles 2.5 mm | ♥ Garter stitch ♥ Stockinette stitch ♥ Leaves patterns ♥ Bobbles |

GAUGE:

Using 2.5 mm needles, in Stockinette stitch, 37 sts and 49 rows = 10x10 cm square.

EXPLANATION OF STITCHES

Garter stitch

Knit all stitches and all rows.

Stockinette stitch

Row 1 (and RS rows): Knit all stitches.

Row 2 (and WS rows): Purl all stitches.

Leaves Pattern

See charts A and B.

Bobbles

Bobble: Knit 3 sts into 1 (k1, p1, k1), turn; purl 3, turn; knit 3, turn; purl 3, turn; slip 1, knit 2 together and pass the slipped stitch over the knitted one.

Large Bobble: Knit 4 sts into 1 (k1, p1, k1, p1), turn; purl 4, turn; knit 4, turn; purl 4, turn; slip 1, knit 4 together and pass the slipped stitch over the knitted one.

Short Rows

They are used to shape the fabric, in this case to avoid the buttoning strips (worked in Garter stitch) being shorter than the rest of the body (knitted in Stockinette stitch).

The technique consists of knitting to the desired point, turning the work around, and continuing knitting on the other side in order to knit more rows in one section of the garment.

To avoid holes in the area where the work is turned, we "wrap" a stitch with yarn as follows:

1) Reach the point where we must turn the work, bring the yarn forward, slip the next stitch from left needle to right needle, bring the yarn to the back of the work and slip the stitch back to the left needle. Turn the work over and continue knitting.

2) When we reach a stitch that is "wrapped" we lift the strand that wraps it and knit it together with the stitch that is wrapping so that there are no holes left behind

For this dress, make short rows on the buttoning strips sts every 5 rows, starting on the first row of

the skirt section. Short rows count towards buttonhole separation.

- **Short rows (RS):** Knit 6 sts. Wrap next stitch and turn the work. Knit 6 sts, to end of row and turn. Work the row as specified in pattern.
- **Short rows (WS):** Knit 6 sts. Wrap next stitch and turn the work. Knit 6 sts to end of row and turn. Work the row as specified in pattern.

Repeat these two rows every 5 rows.

Lifeline

Threading a contrasting thread or yarn through a row of stitches. In this pattern, it will serve to mark where to pick up the ruffle stitches later.

To add a lifeline, you simply thread a tapestry needle with a smooth contrasting yarn and pass it through the live stitches on your needle, typically after completing a row.

DESIGNER'S NOTE

- ♥ The first and last stitches on each row are considered edge (selvedge) stitches. The first one is always slipped without knitting (except on the first row after casting on stitches) and the last one is worked according to pattern.
- ♥ The number of stitches to increase or decrease is represented by two figures separated by the 'x' sign (for example decrease 21x8 sts). In these cases, the first figure corresponds to the number of times to increase/decrease (rows), and the second number to the number of stitches that are increased/decreased for each row. In the example presented, you would decrease 21 times 8 stitches.
- ♥ The right and left sides in the pattern are those of the garment as worn.

DRESS

The dress is knitted in one piece starting at the neckline.

The first and last 6 sts will form the buttoning strips and are always worked in Garter stitch, making 6 buttonholes (knit 2 together, yarn over) on the right-side back, 2 sts from the edge, the first one on row 5 from beginning of work, and the next ones 20 rows apart.

With pearl cotton cast on 63 sts and knit 4 rows.

YOKE

Begin the yoke following the Leaf pattern (chart A). You will finish the yoke section with 245 sts.

Continue in Stockinette stitch.

Raglan Increases

Continue in Stockinette stitch making 10 rows of raglan increases (=yarn over) on RS rows, on both sides of the two stitches that separate the front, back, and sleeves (= 8 additional sts. for each row of increases).

The distribution of the **raglan increases** is as follows:

Right back (39 sts) | 2 sts | arm opening (40 sts)
 | 2 sts | front (79 sts) | 2 sts | arm opening
 (40 sts) | left back (39 sts).

Yoke ruffle: Before starting row 3, run a lifeline through every stitch, except the first and last 6 sts that make up the border.


Leave the arm opening stitches (42 sts each side) on hold on this lifeline. These stitches will be incorporated into the ruffle.





Continue the raglan increases for the back sides (43 sts each) and front side (87 sts) pieces separately.

At the end of the increases, you will have 46 sts for each back piece and 93 sts for the front piece (=185 sts).

SKIRT

Pick up back side and front side stitches (=185 sts).

Work 88 rows in Stockinette stitch, casting on the first row 2 sts at each armhole space, ensuring to place markers  before and after the armhole stitches as follows:

Right back-side: 44 sts , 2 sts, cast on 2 sts, 2 sts 
 front side: 89 sts , 2 sts, cast on 2 sts, 2 sts  left
 back-side: 44 sts. (=189 sts)

Increase 10 x 4 sts every 8 rows, at each side of the armhole sts, starting on row 7 of this section (=229 sts at the end of increases).

Make short rows on the buttoning strips sts every 5 rows, starting on the first row.

Short rows count towards buttonhole separation.

Work 4 rows in Garter stitch.

SKIRT RUFFLE

Work leaves pattern following chart B (=405 sts at the end of pattern).

Work 4 rows in Garter stitch.

Bind (cast) off all stitches.

YOKE RUFFLE

Pick up the stitches around the yoke marked with the lifeline, excluding the first and last 6 sts that make up the border (=241 sts).

Work 12 rows in Stockinette stitch. On the first row, insert one stitch between each existing stitch (=481 sts).

Work 4 rows in Garter stitch.

Bind (cast) off all stitches.

FINISHING

Weave in ends.

Sew buttons on the left buttoning strip at the height of the buttonholes.

ABBREVIATIONS

cm = centimeters

gr = grams

K = knit

K2Tog = knit 2 sts together

m = meters

mm = millimeters

RS = right side

st(s) = stitch(es)

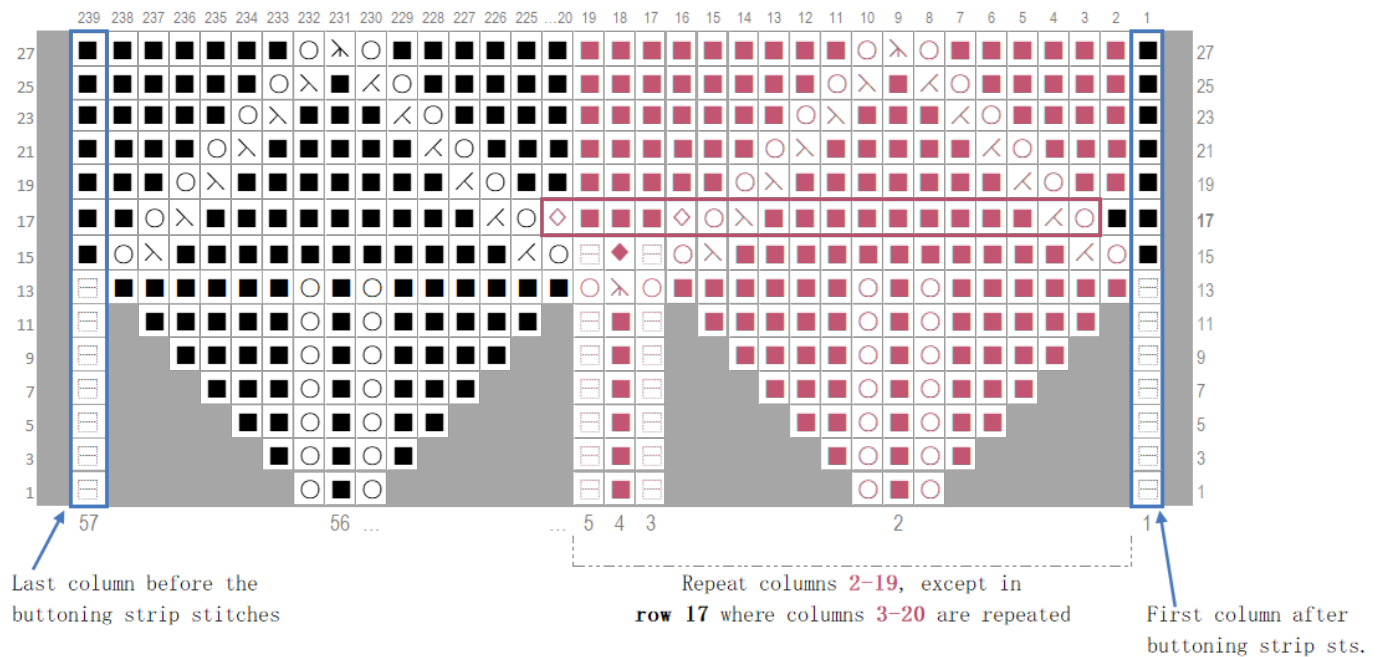
WS = wrong side

 = suggests where to place a marker

BLANK SPACE FOR NOTES

CHART A

GRAPHIC A - LEAVES PATTERN



Explanation of symbols

○ Yarn over

■ Knit

□ Purl

✕ Knit 2 stitches together

↘ Slip 1 knit 1: Slip one stitch, knit 1 stitch and pass the slipped stitch over the knitted one

↗ Slip 1 knit 2 together: Slip one stitch, knit 2 stitches and pass the slipped stitch over the knitted one.

■ Empty space. Does not count as a stitch

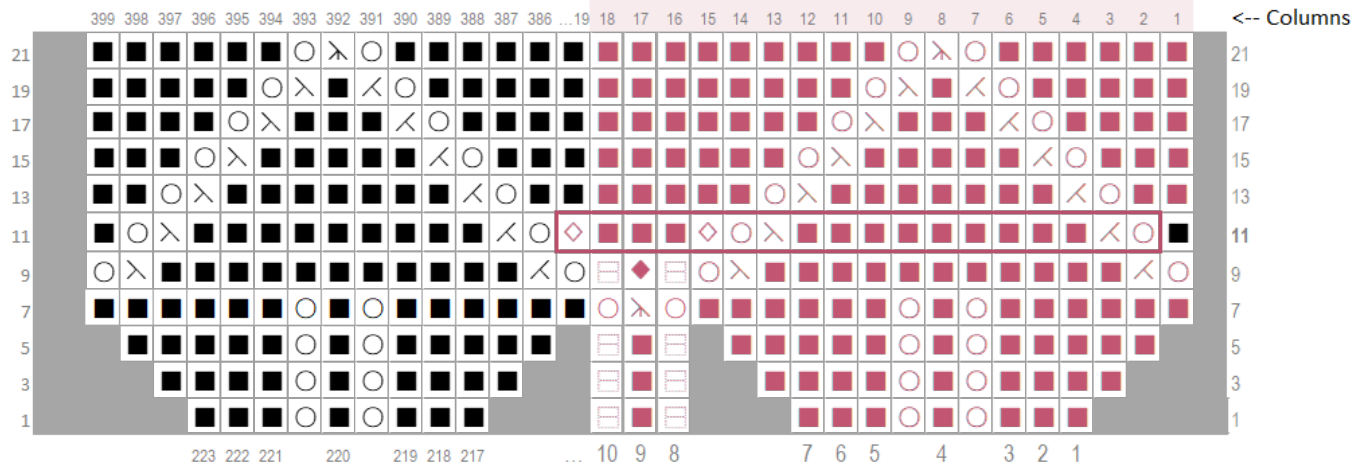
Even rows = Work stitches as they present themselves and purl yarn overs.

◆ Large bobble

◇ Bobble

CHART B

GRAPHIC B - LEAVES PATTERN



Repeat columns 1-18, except in
row 11 where columns 2-19 are repeated

Explanation of symbols

- | | | | |
|---|--|---|--------------|
| ○ | Yarn over | ◆ | Large bobble |
| ■ | Knit | ◇ | Bobble |
| □ | Purl | | |
| ↖ | Knit 2 stitches together | | |
| ↗ | Slip 1 knit 1: Slip one stitch, knit 1 stitch and pass the slipped stitch over the knitted one | | |
| ↘ | Slip 1 knit 2 together: Slip one stitch, knit 2 stitches and pass the slipped stitch over the knitted one. | | |
| ■ | Empty space. Does not count as a stitch | | |

Even rows = Work stitches as they present themselves and purl yarn overs.

MEASUREMENTS



PHOTOS



Photo 1. Working on the yoke pattern.



Photo 2. Use a tapestry needle and contrasting color thread to insert the lifeline.



Photo 3. Halfway through the lifeline.



Photo 4. For markers, I like to use pieces of threads tied to form a loop, instead of plastic or metal markers.



Photo 5. Working on the skirt section.



Photo 6. Dress is taking shape!



Photo 7. Working on the ruffle section.



Photo 8. Binding (casting) off stitches!



Photo 9. Dress is done. Now we work on the yoke ruffle.



Photo 10. Picking up lifeline stitches with knitting needle.
Video tutorial [here](#).



Photo 11. Lifeline stitches are now in the knitting needle.
First row lifeline increases video tutorial [here](#).



Photo 12. Working on the yoke ruffle.



Photo 13. Finished dress, back side.



Photo 14. Finished dress, front side.

Fleur de Lune Dress - Pattern 141



Thank you for trusting CuddlyBaby Knitwear for your knitting patterns. I hope the pattern is helpful and that you have an enjoyable time knitting this enchanting baby dress. You can access more patterns on my blog <https://en.cuddlybabyknitwear.com/> and my [Etsy](#) store.

Follow us on social media to be informed of our latest knitting patterns and baby outfits, discounts, and more. And don't forget to share your work on Instagram or Facebook by tagging **@CuddlyBabyKnitwear**. I can't wait to see the photos of your work!





FLEUR DE LUNE DRESS

| # Row | Description of stitches per row | Row | Stitch type | Total stitches |
|--|---|-----|--------------|----------------|
| Cast on 63 stitches. Work 4 rows in Garter stitch. | | | | |
| YOKE | | | | |
| | 1 K63 | 1 | Garter | 63 |
| | 2 K63 | 2 | Garter | 63 |
| | 3 K63 | 3 | Garter | 63 |
| | 4 K63 | 4 | Garter | 63 |
| Work leaf pattern (Chart A). The first and last 6 sts form the buttoning strips and are always in Garter stitch. Make 6 buttonholes on the right side buttoning strip, 2 sts from the edge, every 20 rows, starting on next row. | | | | |
| BH | 5 K2Tog YO K2 P1 (YO K1 YO P1 K1 P1)* YO K1 YO P1 K6 | 1 | Leaf Pattern | 89 |
| | 6 K6 (K1 P3 K1 P1)* K1 P3 K1 K6 | 2 | Leaf Pattern | 89 |
| | 7 K6 P1 (K1 YO K1 YO K1 P1 K1 P1)* K1 YO K1 YO K1 P1 K6 | 3 | Leaf Pattern | 115 |
| | 8 K6 (K1 P5 K1 P1)* K1 P5 K1 K6 | 4 | Leaf Pattern | 115 |
| | 9 K6 P1 (K2 YO K1 YO K2 P1 K1 P1)* K2 YO K1 YO K2 P1 K6 | 5 | Leaf Pattern | 141 |
| | 10 K6 (K1 P7 K1 P1)* K1 P7 K1 K6 | 6 | Leaf Pattern | 141 |
| | 11 K6 P1 (K3 YO K1 YO K3 P1 K1 P1)* K3 YO K1 YO K3 P1 K6 | 7 | Leaf Pattern | 167 |
| | 12 K6 (K1 P9 K1 P1)* K1 P9 K1 K6 | 8 | Leaf Pattern | 167 |
| | 13 K6 P1 (K4 YO K1 YO K4 P1 K1 P1)* K4 YO K1 YO K4 P1 K6 | 9 | Leaf Pattern | 193 |
| | 14 K6 (K1 P11 K1 P1)* K1 P11 K1 K6 | 10 | Leaf Pattern | 193 |
| | 15 K6 P1 (K5 YO K1 YO K5 P1 K1 P1)* K5 YO K1 YO K5 P1 K6 | 11 | Leaf Pattern | 219 |
| | 16 K6 (K1 P13 K1 P1)* K1 P13 K1 K6 | 12 | Leaf Pattern | 219 |
| | 17 K6 P1 (K6 YO K1 YO K6 YO S1K2T YO)* K6 YO K1 YO K6 P1 K6 | 13 | Leaf Pattern | 245 |
| | 18 K6 K1 P231 K1 K6 | 14 | Leaf Pattern | 245 |
| | 19 K6 K1 (YO K2Tog K11 S1K1 YO P1 1BOB P1)* YO K2Tog K11 S1K1 YO K1 K6 | 15 | Leaf Pattern | 245 |
| | 20 K6 P1 (P15 K1 P1 K1)* P16 K6 | 16 | Leaf Pattern | 245 |
| | 21 K6 K2 (YO K2Tog K9 S1K1 YO 1bob K3 1bob)* YO K2Tog K9 S1K1 YO K2 K6 | 17 | Leaf Pattern | 245 |
| | 22 K6 P233 K6 | 18 | Leaf Pattern | 245 |
| | 23 K6 K1 (K2 YO K2Tog K7 S1K1 YO K5)* K2 YO K2Tog K7 S1K1 YO K3 K6 | 19 | Leaf Pattern | 245 |
| | 24 K6 P233 K6 | 20 | Leaf Pattern | 245 |
| BH | 25 K2 K2Tog YO K2 K1 (K3 YO K2Tog K5 S1K1 YO K6)* K3 YO K2Tog K5 S1K1 YO K4 K6 | 21 | Leaf Pattern | 245 |
| | 26 K6 P233 K6 | 22 | Leaf Pattern | 245 |
| | 27 K6 K1 (K4 YO K2Tog K3 S1K1 YO K7)* K4 YO K2Tog K3 S1K1 YO K5 K6 | 23 | Leaf Pattern | 245 |

Size 3-6 months

Materials 150 gr baby blue pearl cotton yarn #5; knitting needles sizes 2.5 mm; 6 small buttons.

| # Row | Description of stitches per row | Row | Stitch type | Total stitches |
|--|--|-----|--------------------|----------------|
| | 28 K6 P233 K6 | 24 | Leaf Pattern | 245 |
| | 29 K6 K1 (K5 YO K2Tog K1 S1K1 YO K8)* K5 YO K2Tog K1 S1K1 YO K6 K6 | 25 | Leaf Pattern | 245 |
| | 30 K6 P233 K6 | 26 | Leaf Pattern | 245 |
| | 31 K6 K1 (K6 YO S1K2T YO K9)* K6 YO S1K2T YO K7 K6 | 27 | Leaf Pattern | 245 |
| | 32 K6 P233 K6 | 28 | Leaf Pattern | 245 |
| Raglan increases: Divide the work as follows: | | | | |
| Right back (39 sts) 2 sts right arm opening (40 sts) 2 sts front (79 sts) 2 sts left arm opening (40 sts) 2 sts left back (39 sts) | | | | |
| Work 10 rows in Stockinette st, increasing 5x4 sts on RS rows, 1 st at each side of the 2 dividing sts. | | | | |
| | 33 K6 K33 YO K2 YO K40 YO K2 YO K79 YO K2 YO K40 YO K2 YO K33 K6 | 1 | Stockinette/raglan | 253 |
| | 34 K6 P241 K6 | 2 | Stockinette/raglan | 253 |
| Yoke Ruffle: Run a lifeline (piece of thread or yarn) through every stitch, except the first and last 6 sts that make up the border, to mark where to pick up the ruffle stitches later. The arm opening stitches (42 sts each side) will be left on hold on this lifeline. Continue the raglan increases for the back and front pieces separately. | | | | |
| Right Backside | | | | |
| | 35 K6 K34 YO K2 | 3 | Stockinette/raglan | 43 |
| | 36 K2 P35 K6 | 4 | Stockinette/raglan | 43 |
| | 37 K6 K35 YO K2 | 5 | Stockinette/raglan | 44 |
| | 38 K2 P36 K6 | 6 | Stockinette/raglan | 44 |
| | 39 K6 K36 YO K2 | 7 | Stockinette/raglan | 45 |
| | 40 K2 P37 K6 | 8 | Stockinette/raglan | 45 |
| | 41 K6 K37 YO K2 | 9 | Stockinette/raglan | 46 |
| | 42 K2 P38 K6 | 10 | Stockinette/raglan | 46 |
| Frontside | | | | |
| | 35 K2 YO K81 YO K2 | 3 | Stockinette/raglan | 87 |
| | 36 K2 P83 K2 | 4 | Stockinette/raglan | 87 |
| | 37 K2 YO K83 YO K2 | 5 | Stockinette/raglan | 89 |
| | 38 K2 P85 K2 | 6 | Stockinette/raglan | 89 |
| | 39 K2 YO K85 YO K2 | 7 | Stockinette/raglan | 91 |
| | 40 K2 P87 K2 | 8 | Stockinette/raglan | 91 |
| | 41 K2 YO K87 YO K2 | 9 | Stockinette/raglan | 93 |
| | 42 K2 P89 K2 | 10 | Stockinette/raglan | 93 |
| Left backside | | | | |
| | 35 K2 YO K34 K6 | 3 | Stockinette/raglan | 43 |
| | 36 K6 P35 K2 | 4 | Stockinette/raglan | 43 |
| | 37 K2 YO K35 K6 | 5 | Stockinette/raglan | 44 |
| | 38 K6 P36 K2 | 6 | Stockinette/raglan | 44 |
| | 39 K2 YO K36 K6 | 7 | Stockinette/raglan | 45 |
| | 40 K6 P37 K2 | 8 | Stockinette/raglan | 45 |
| | 41 K2 YO K37 K6 | 9 | Stockinette/raglan | 46 |

Fold down the line



FLEUR DE LUNE DRESS (cont. 1)

| # Row | Description of stitches per row | Row | Stitch type | Total stitches |
|---|---|-----|--------------------|----------------|
| 42 | K6 P38 K2 | 10 | Stockinette/raglan | 46 |
| SKIRT | | | | |
| Pick-up back side and front side stitches (185 sts). | | | | |
| Work 88 rows in Stockinette stitch. On first row, cast on 2 sts at each armhole space, placing markers before and after the armhole stitches. | | | | |
| Increase 10x4 sts, every 8 rows, at each side of the armhole sts, starting on row 7 of this section. | | | | |
| Make short rows on the buttoning strips sts every 5 rows, starting from the first row. | | | | |
| Short rows should be included in the buttonhole separation count. | | | | |
| 43 | K6, wrap next stitch and turn | 1 | Stockinette | 189 |
| | K6, turn | | | |
| BH | K2 K2Tog YO K2 K38 K2 CO2 K2 K89 K2 CO2 K2 K38 K6, turn | | | |
| | K6, wrap next stitch and turn | | | |
| | K6 | | | |
| 44 | K6 P177 K6 | 2 | Stockinette | 189 |
| 45 | K6 K177 K6 | 3 | Stockinette | 189 |
| 46 | K6 P177 K6 | 4 | Stockinette | 189 |
| 47 | K6 K177 K6 | 5 | Stockinette | 189 |
| 48 | K6 P177 K6 | 6 | Stockinette | 189 |
| 49 | K6, wrap next stitch and turn | 7 | Stockinette | 189 |
| | K6 | | | 189 |
| inc | K6 K38 M1R K6 M1L K89 M1R K6 M1L K38 K6 | | | 193 |
| | K6, wrap next stitch and turn | | | 193 |
| | K6 | | | 193 |
| 50 | K6 P177 K6 | 8 | Stockinette | 193 |
| 51 | K6 K181 K6 | 9 | Stockinette | 193 |
| 52 | K6 P181 K6 | 10 | Stockinette | 193 |
| 53 | K6 K181 K6 | 11 | Stockinette | 193 |
| 54 | K6 P181 K6 | 12 | Stockinette | 193 |
| 55 | K6, wrap next stitch and turn | 13 | Stockinette | 193 |
| | K6 | | | 193 |
| | K6 K181 K6 | | | 193 |
| | K6, wrap next stitch and turn | | | 193 |
| | K6 | | | 193 |
| 56 | K6 P181 K6 | 14 | Stockinette | 193 |
| inc | K6 K39 M1R K6 M1L K91 M1R K6 M1L K39 K6 | 15 | Stockinette | 197 |
| 58 | K6 P185 K6 | 16 | Stockinette | 197 |
| BH | K2 K2Tog YO K2 K185 K6 | 17 | Stockinette | 197 |
| 60 | K6 P185 K6 | 18 | Stockinette | 197 |
| 61 | K6, wrap next stitch and turn | 19 | Stockinette | 197 |
| | K6 | | | 197 |
| | K6 K185 K6 | | | 197 |
| | K6, wrap next stitch and turn | | | 197 |
| | K6 | | | 197 |
| 62 | K6 P185 K6 | 20 | Stockinette | 197 |

Size 3-6 months

Materials 150 gr baby blue pearl cotton yarn #5; knitting needles sizes 2.5 mm; 6 small buttons.

| # Row | Description of stitches per row | Row | Stitch type | Total stitches |
|-------|--|-----|-------------|----------------|
| 63 | K6 K185 K6 | 21 | Stockinette | 197 |
| 64 | K6 P185 K6 | 22 | Stockinette | 197 |
| inc | K6 K40 M1R K6 M1L K93 M1R K6 M1L K40 K6 | 23 | Stockinette | 201 |
| 66 | K6 P189 K6 | 24 | Stockinette | 201 |
| 67 | K6, wrap next stitch and turn | 25 | Stockinette | 201 |
| | K6 | | | 201 |
| | K6 K189 K6 | | | 201 |
| | K6, wrap next stitch and turn | | | 201 |
| | K6 | | | 201 |
| 68 | K6 P189 K6 | 26 | Stockinette | 201 |
| 69 | K6 K189 K6 | 27 | Stockinette | 201 |
| 70 | K6 P189 K6 | 28 | Stockinette | 201 |
| 71 | K6 K189 K6 | 29 | Stockinette | 201 |
| 72 | K6 P189 K6 | 30 | Stockinette | 201 |
| 73 | K6, wrap next stitch and turn | 31 | Stockinette | 201 |
| | K6 | | | 201 |
| inc | BH K2 K2Tog YO K2 K41 M1R K6 M1L K95 M1R K6 M1L K41 K6 | | | 205 |
| | K6, wrap next stitch and turn | | | 205 |
| | K6 | | | 205 |
| 74 | K6 P193 K6 | 32 | Stockinette | 205 |
| 75 | K6 K193 K6 | 33 | Stockinette | 205 |
| 76 | K6 P193 K6 | 34 | Stockinette | 205 |
| 77 | K6 K193 K6 | 35 | Stockinette | 205 |
| 78 | K6 P193 K6 | 36 | Stockinette | 205 |
| 79 | K6, wrap next stitch and turn | 37 | Stockinette | 205 |
| | K6 | | | 205 |
| | K6 K193 K6 | | | 205 |
| | K6, wrap next stitch and turn | | | 205 |
| | K6 | | | 205 |
| 80 | K6 P193 K6 | 38 | Stockinette | 205 |
| inc | K6 K42 M1R K6 M1L K97 M1R K6 M1L K42 K6 | 39 | Stockinette | 209 |
| 82 | K6 P197 K6 | 40 | Stockinette | 209 |
| 83 | K6 K197 K6 | 41 | Stockinette | 209 |
| 84 | K6 P197 K6 | 42 | Stockinette | 209 |
| 85 | K6, wrap next stitch and turn | 43 | Stockinette | 209 |
| | K6 | | | 209 |
| | K6 K197 K6 | | | 209 |
| | K6, wrap next stitch and turn | | | 209 |
| | K6 | | | 209 |
| 86 | K6 P197 K6 | 44 | Stockinette | 209 |
| 87 | K6 K197 K6 | 45 | Stockinette | 209 |
| 88 | K6 P197 K6 | 46 | Stockinette | 209 |
| inc | K6 K43 M1R K6 M1L K99 | 47 | Stockinette | 213 |
| BH | M1R K6 M1L K43 K6 | | | |

Fold down the line



Size 3-6 months

Materials 150 gr baby blue pearl cotton yarn #5; knitting needles sizes 2.5 mm; 6 small buttons.

FLEUR DE LUNE DRESS (cont. 2)

| # Row | Description of stiches per row | Row | Stitch type | Total stiches |
|-------|--|-----|-------------|---------------|
| 90 | K6 P201 K6 | 48 | Stockinette | 213 |
| 91 | K6, wrap next stitch and turn | 49 | Stockinette | 213 |
| | K6 | | | 213 |
| | K6 K201 K6 | | | 213 |
| | K6, wrap next stitch and turn | | | 213 |
| | K6 | | | 213 |
| 92 | K6 P201 K6 | 50 | Stockinette | 213 |
| 93 | K6 K201 K6 | 51 | Stockinette | 213 |
| 94 | K6 P201 K6 | 52 | Stockinette | 213 |
| 95 | K6 K201 K6 | 53 | Stockinette | 213 |
| 96 | K6 P201 K6 | 54 | Stockinette | 213 |
| 97 | K6, wrap next stitch and turn | 55 | Stockinette | 213 |
| | K6 | | | 213 |
| inc | K6 K44 M1R K6 M1L K101 M1R K6 M1L K44 K6 | | | 217 |
| | K6, wrap next stitch and turn | | | 217 |
| | K6 | | | 217 |
| 98 | K6 P201 K6 | 56 | Stockinette | 217 |
| 99 | K6 K205 K6 | 57 | Stockinette | 217 |
| 100 | K6 P205 K6 | 58 | Stockinette | 217 |
| 101 | K6 K205 K6 | 59 | Stockinette | 217 |
| 102 | K6 P205 K6 | 60 | Stockinette | 217 |
| 103 | K6, wrap next stitch and turn | 61 | Stockinette | 217 |
| | K6 | | | 217 |
| | K6 K205 K6 | | | 217 |
| | K6, wrap next stitch and turn | | | 217 |
| | K6 | | | 217 |
| 104 | K6 P205 K6 | 62 | Stockinette | 217 |
| inc | K6 K45 M1R K6 M1L K103 M1R K6 M1L K45 K6 | 63 | Stockinette | 221 |
| 106 | K6 P209 K6 | 64 | Stockinette | 221 |
| 107 | K6 K209 K6 | 65 | Stockinette | 221 |
| 108 | K6 P209 K6 | 66 | Stockinette | 221 |
| 109 | K6, wrap next stitch and turn | 67 | Stockinette | 221 |
| | K6 | | | 221 |
| | K6 K209 K6 | | | 221 |
| | K6, wrap next stitch and turn | | | 221 |
| | K6 | | | 221 |
| 110 | K6 P209 K6 | 68 | Stockinette | 221 |
| 111 | K6 K209 K6 | 69 | Stockinette | 221 |
| 112 | K6 P209 K6 | 70 | Stockinette | 221 |
| inc | K6 K46 M1R K6 M1L K105 M1R K6 M1L K46 K6 | 71 | Stockinette | 225 |
| 114 | K6 P213 K6 | 72 | Stockinette | 225 |
| 115 | K6, wrap next stitch and turn | 73 | Stockinette | 225 |
| | K6 | | | 225 |
| | K6 K213 K6 | | | 225 |

Fold down the line

| # Row | Description of stiches per row | Row | Stitch type | Total stiches |
|-------------------------------|---|-----|--------------|---------------|
| | K6, wrap next stitch and turn | | | 225 |
| | K6 | | | 225 |
| 116 | K6 P213 K6 | 74 | Stockinette | 225 |
| 117 | K6 K213 K6 | 75 | Stockinette | 225 |
| 118 | K6 P213 K6 | 76 | Stockinette | 225 |
| 119 | K6 K213 K6 | 77 | Stockinette | 225 |
| 120 | K6 P213 K6 | 78 | Stockinette | 225 |
| 121 | K6, wrap next stitch and turn | 79 | Stockinette | 225 |
| | K6 | | | 225 |
| inc | K6 K47 M1R K6 M1L K107 M1R K6 M1L K47 K6 | | | 229 |
| | K6, wrap next stitch and turn | | | 229 |
| | K6 | | | 229 |
| 122 | K6 P213 K6 | 80 | Stockinette | 229 |
| 123 | K6 K217 K6 | 81 | Stockinette | 229 |
| 124 | K6 P217 K6 | 82 | Stockinette | 229 |
| 125 | K6 K217 K6 | 83 | Stockinette | 229 |
| 126 | K6 P217 K6 | 84 | Stockinette | 229 |
| Work 4 rows in Garter stitch. | | | | |
| 127 | K229 | 1 | Garter | 229 |
| 128 | K229 | 2 | Garter | 229 |
| 129 | K229 | 3 | Garter | 229 |
| 130 | K229 | 4 | Garter | 229 |
| Work leaf pattern (Chart B). | | | | |
| 131 | K6 (K3 YO K1 YO K3 P1 K1 P1)* K3 YO K1 YO K3 K6 | 1 | Leaf Pattern | 273 |
| 132 | K6 (P9 K1 P1 K1)* P9 K6 | 2 | Leaf Pattern | 273 |
| 133 | K6 (K4 YO K1 YO K4 P1 K1 P1)* K4 YO K1 YO K4 K6 | 3 | Leaf Pattern | 317 |
| 134 | K6 (P11 K1 P1 K1)* P11 K6 | 4 | Leaf Pattern | 317 |
| 135 | K6 (K5 YO K1 YO K5 P1 K1 P1)* K5 YO K1 YO K5 K6 | 5 | Leaf Pattern | 361 |
| 136 | K6 (P13 K1 P1 K1)* P13 K6 | 6 | Leaf Pattern | 361 |
| 137 | K6 (K6 YO K1 YO K6 YO S1K2T YO)* K6 YO K1 YO K6 K6 | 7 | Leaf Pattern | 405 |
| 138 | K6 P349 K6 | 8 | Leaf Pattern | 405 |
| 139 | K6 (YO K2Tog K11 S1K1 YO P1 1BOB P1)* YO K2Tog K11 S1K1 YO K6 | 9 | Leaf Pattern | 405 |
| 140 | K6 (P15 K1 P1 K1)* P15 K6 | 10 | Leaf Pattern | 405 |
| 141 | K6 K1 (YO K2Tog K9 S1K1 YO 1bob K3 1bob)* YO K2Tog K9 S1K1 YO K1 K6 | 11 | Leaf Pattern | 405 |
| 142 | K6 P393 K6 | 12 | Leaf Pattern | 405 |
| 143 | K6 (K2 YO K2Tog K7 S1K1 YO K5)* K2 YO K2Tog K7 S1K1 YO K2 K6 | 13 | Leaf Pattern | 405 |
| 144 | K6 P393 K6 | 14 | Leaf Pattern | 405 |



Size 3-6 months

Materials 150 gr baby blue pearl cotton yarn #5; knitting needles sizes 2.5 mm; 6 small buttons.

FLEUR DE LUNE DRESS (cont. 3)

| # Row | Description of stitches per row | Row | Stitch type | Total stitches |
|------------------------------|--|-----|--------------|----------------|
| 145 | K6 (K3 YO K2Tog K5 S1K1 YO K6)* K3 YO K2Tog K5 S1K1 YO K3 K6 | 15 | Leaf Pattern | 405 |
| 146 | K6 P393 K6 | 16 | Leaf Pattern | 405 |
| 147 | K6 (K4 YO K2Tog K3 S1K1 YO K7)* K4 YO K2Tog K3 S1K1 YO K4 K6 | 17 | Leaf Pattern | 405 |
| 148 | K6 P393 K6 | 18 | Leaf Pattern | 405 |
| 149 | K6 (K5 YO K2Tog K1 S1K1 YO K8)* K5 YO K2Tog K1 S1K1 YO K5 K6 | 19 | Leaf Pattern | 405 |
| 150 | K6 P393 K6 | 20 | Leaf Pattern | 405 |
| 151 | K6 (K6 YO S1K2T YO K9)* K6 YO S1K2T YO K6 K6 | 21 | Leaf Pattern | 405 |
| 152 | K6 P393 K6 | 22 | Leaf Pattern | 405 |
| Work 4 rows in Garter Stitch | | | | |
| 153 | K405 | 1 | Garter | 405 |
| 154 | K405 | 2 | Garter | 405 |
| 155 | K405 | 3 | Garter | 405 |
| 156 | K405 | 4 | Garter | 405 |
| Bind (cast) off stitches | | | | |

YOKE RUFFLE

Pick up the stitches around the yoke marked with the lifeline (=241 sts).

Work 12 rows in Stockinette stitch.

On the first row, insert one stitch between each existing stitch (=481 sts).

| | | | | |
|----|-------------|----|-------------|-----|
| 1 | K1 (+1 K1)* | 1 | Stockinette | 481 |
| 2 | P481 | 2 | Stockinette | 481 |
| 3 | K481 | 3 | Stockinette | 481 |
| 4 | P481 | 4 | Stockinette | 481 |
| 5 | K481 | 5 | Stockinette | 481 |
| 6 | P481 | 6 | Stockinette | 481 |
| 7 | K481 | 7 | Stockinette | 481 |
| 8 | P481 | 8 | Stockinette | 481 |
| 9 | K481 | 9 | Stockinette | 481 |
| 10 | P481 | 10 | Stockinette | 481 |
| 11 | K481 | 11 | Stockinette | 481 |
| 12 | P481 | 12 | Stockinette | 481 |

Work 4 rows in Garter stitch.

| | | | | |
|--------------------------|------|---|--------|-----|
| 13 | K481 | 1 | Garter | 481 |
| 14 | K481 | 2 | Garter | 481 |
| 15 | K481 | 3 | Garter | 481 |
| 16 | K481 | 4 | Garter | 481 |
| Bind (cast) off stitches | | | | |

Measurements



Fold down the line



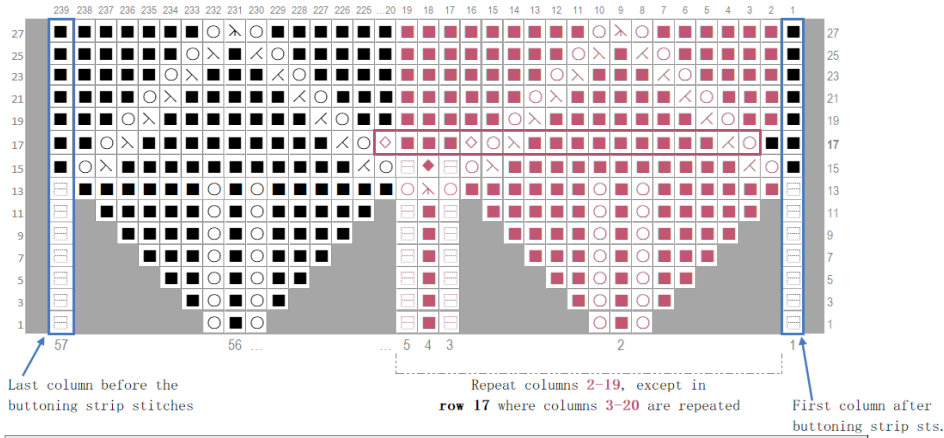
Cuddly Baby

Pattern #141 Fleur de Lune Dress

DESCRIPTIONS AND FINISHINGS

Charts

GRAPHIC A - LEAVES PATTERN



Explanation of symbols

- | | | | |
|---|--|---|--------------|
| ○ | Yarn over | ◆ | Large bobble |
| ■ | Knit | ◇ | Bobble |
| □ | Purl | | |
| ✕ | Knit 2 stitches together | | |
| ↗ | Slip 1 knit 1: Slip one stitch, knit 1 stitch and pass the slipped stitch over the knitted one | | |
| ↘ | Slip 1 knit 2 together: Slip one stitch, knit 2 stitches and pass the slipped stitch over the knitted one. | | |
| ■ | Empty space. Does not count as a stitch | | |

Even rows = Work stitches as they present themselves and purl yarn overs.

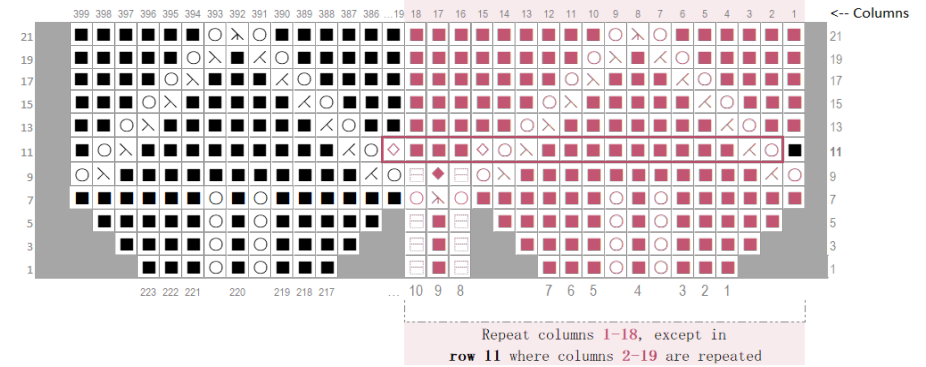
Size 3-6 months

Materials 150 gr baby blue pearl cotton yarn #5; knitting needles sizes 2.5 mm; 6 small buttons.

Page 5

Charts

GRAPHIC B - LEAVES PATTERN



Explanation of symbols

- | | | | |
|---|--|---|--------------|
| ○ | Yarn over | ◆ | Large bobble |
| ■ | Knit | ◇ | Bobble |
| □ | Purl | | |
| ✕ | Knit 2 stitches together | | |
| ↗ | Slip 1 knit 1: Slip one stitch, knit 1 stitch and pass the slipped stitch over the knitted one | | |
| ↘ | Slip 1 knit 2 together: Slip one stitch, knit 2 stitches and pass the slipped stitch over the knitted one. | | |
| ■ | Empty space. Does not count as a stitch | | |

Even rows = Work stitches as they present themselves and purl yarn overs.

Fold down the line



DESCRIPTIONS AND FINISHINGS

Abbreviations

- +1** Insert 1 stitch in between stitches
BH Marks a row with a buttonhole
BO Bind (cast) off the number of stitches indicated
bob Bobble
BOB Large bobble
cm Centimeters
gr Grams
inc Marks a row with increases
K Knit
K2Tog Knit 2 stitches together
m Meters
M1L **Make 1 Left:** Pick up with the left needle the horizontal strand of yarn between the two needles, from front to back. Knit through the back loop the stitch you just picked up on your left needle.
M1R **Make 1 Right:** Pick up with the left needle the horizontal strand of yarn between the two needles, from back to front. Knit into the front of the stitch you just picked up on your left needle.
mm Millimeters
P Purl
RS/WS Right-side/wrong-side rows
S1K1 **Slip 1 knit 1:** Slip one stitch, knit 1 stitch and pass the slipped stitch over the knitted one.
S1K2T **Slip 1 knit 2 together:** Slip 1 st, knit 2 sts together and pass the slipped stitch over the knitted one.
St(s) Stitch(es)
YO Yarn Over
()* Repeat instructions in ()* until end of row or the next set of stitches. An exponent number indicates the number of repetitions. For example: ()⁴ = repeat 4 times the stitches inside the ().
| Indicates where to place a marker between stitches.

DESIGNERS NOTE

The decreases and increases are represented by two numbers separated by the 'x' sign.
 For instance, if the instructions state to increase 2x3 sts, you will be increasing a total of 2 times, 3 stitches each time (=6 sts increased).

Size 3-6 months

Materials 150 gr baby blue pearl cotton yarn #5; knitting needles sizes 2.5 mm; 6 small buttons.

Explanation of Stitches**Garter Stitch**

Knit all rows

Stockinette Stitch

Row 1 (and all RS rows): Knit all stitches

Row 2 (and all WS rows): Purl all stitches

Bobble

Knit 3 stitches into 1 st (K1 P1 K1), turn; purl 3 sts, turn; knit 3 sts, turn; purl 3 sts, turn; slip 1 stitch, knit 2 together, slip passed stitch over the knitted one.

Large bobble

Knit 4 stitches into 1 (K1 P1 K1 P1), turn; purl 4 sts, turn; knit 4 sts, turn; purl 4 sts, turn; slip 1 stitch, knit 3 together, slip passed stitch over the knitted one.

Short rows (marked in green for easy identification)

They are used to shape the fabric, in this case to avoid the buttoning strips (worked in Garter stitch) being longer than the rest of the body (Stockinette st).

The technique consists of knitting to the desired point, turning the work around, and continuing knitting on the other side in order to knit more rows in one section of the garment.

To avoid holes in the area where the work is turned, we "wrap" a stitch with yarn as follows:

- 1) Reach the point where we must turn the work, bring the yarn forward, slip next stitch from left needle to right needle, bring the yarn to the back of the work and slip the stitch back to the left needle. Turn the work over and continue knitting.
- 2) When we reach a stitch that is "wrapped" we lift the strand that wraps it and knit it together with the stitch that is wrapping so that there are no holes left behind.

FINISHING

- Sew buttons onto the left buttoning strip at the height of the buttonholes
- Weave in ends.